



Special Educational Needs and Disability (SEND) Policy

Oakwood Primary Academy

Approved by:	Kerry Wood (SENDCo)	Date: 24.07.24
Last reviewed on:	August 2021	
Next full review due by:	July 2027 (with interim updates as needed)	

Contents

1. Aims and objectives	3
2. Vision and values	3
3. Legislation and guidance	3
4. Inclusion and equal opportunities	4
5. Definitions	4
6. Roles and responsibilities	6
7. SEN information report	10
8. Our approach to SEND support.....	10
9. Expertise and training of staff	13
10. Links with external professional agencies	13
11. Admission and accessibility arrangements.....	13
12. Complaints about SEND provision	14
13. Monitoring and evaluation arrangements	14
14. Links with other policies and documents	15

1. Aims and objectives

Our special educational needs and disabilities (SEND) policy aims to:

- Make sure our school fully implements national legislation and guidance regarding pupils with SEND. In doing so, we aim to
 - Support and make provision for pupils with special educational needs and disabilities
 - Provide pupils with SEND access to all aspects of school life so they can engage in the activities of the school alongside pupils who do not have SEND
 - Help pupils with SEND fulfil their aspirations and achieve their best
 - Help pupils with SEND become confident individuals living fulfilling lives
 - Communicate with pupils with SEND and their parents or carers and involve them in discussions and decisions about support and provision for the pupil
- Explain the roles and responsibilities of everyone involved in providing for pupils with SEND
- Communicate with, and involve, pupils with SEND and their parents or carers in discussions and decisions about support and provision for the pupil
- Make sure the SEND policy is understood and implemented consistently by all staff

2. Vision and values

Our school vision of 'Being Better Every Day' applies to all children inclusively and we are committed to ensuring we achieve this through our four values of Knowledge, Equality, Determination and Achievement. Children with SEND will have access to a knowledge-rich curriculum and develop skills that will allow them to contribute to a changing world. They will be treated, and treat others, with respect and tolerance and celebrate the diversity within our school community. We want children with SEND to develop the confidence to aim for what they want in life and have the perseverance to overcome any barriers to achieving the best they possibly can.

This policy describes our approach to supporting children with special educational needs or disabilities (SEND) and reflects the SEND Code of Practice.

For more information about how we support children with SEND please also see our SEND Information Report on our school website www.oakwoodprimaryacademy.org

There is information about the support the Local Authority and other services provide in the East Sussex Local Offer for SEND.

3. Legislation and guidance

This is based on the statutory [Special Educational Needs and Disability \(SEND\) Code of Practice](#) and the following legislation:

- [Part 3 of the Children and Families Act 2014](#), which sets out schools' responsibilities for pupils with SEND

- [The Special Educational Needs and Disability Regulations 2014](#), which set out local authorities' and schools' responsibilities for education, health and care (EHC) plans, SEN co-ordinators (SENCOs) and the special educational needs (SEN) information report
- The [Equality Act 2010](#) (section 20), which sets out the school's duties to make reasonable adjustments for pupils with disabilities
- The [Public Sector Equality Duty](#) (section 149 of the Equality Act 2010), which set out the school's responsibilities to eliminate discrimination, harassment and victimisation; and advance equality of opportunity and foster good relations between people who share a protected characteristic (which includes having a disability) and those who don't share it
- The [Governance Handbook](#), which sets out governors responsibilities for pupils with SEND
- The [School Admissions Code](#), which sets out the school's obligation to admit all pupils whose education, health and care (EHC) plan names the school, and its duty not to disadvantage unfairly children with a disability or with special educational needs

This policy also complies with our funding agreement and articles of association.

4. Inclusion and equal opportunities

At our school we strive to create an inclusive teaching environment that offers all pupils, no matter their needs and abilities, a broad, balanced and challenging curriculum. We are committed to offering all pupils the chance to thrive and fulfil their aspirations.

We will achieve this by making reasonable adjustments to teaching, the curriculum and the school environment to make sure that pupils with SEND are included in all aspects of school life.

5. Definitions

5.1 Special educational needs

A pupil has SEN if they have a learning difficulty or disability that requires special educational provision to be made for them.

They have a **learning difficulty or disability** if they have:

- A significantly greater difficulty in learning than most others of the same age, or
- A disability which prevents or hinders them from making use of facilities of a kind generally provided for others of the same age in mainstream schools

Special educational provision is educational or training provision that is additional to, or different from, that made generally for other children or young people of the same age by mainstream schools.

5.2 Disability

Pupils are considered to have a **disability** if they have a physical or mental impairment that has a substantial and long-term adverse effect on their ability to do normal daily activities.

The school will make reasonable adjustments for pupils with disabilities, so that they are not at a substantial disadvantage compared with their peers.

5.3 The 4 areas of need

The needs of pupils with SEND are grouped into 4 broad areas. Pupils can have needs that cut across more than 1 area, and their needs may change over time.

Interventions will be selected that are appropriate for the pupil's particular area(s) of need, at the relevant time.

AREA OF NEED	
Communication and interaction	<p>Pupils with needs in this area have difficulty communicating with others. They may have difficulty understanding what is being said to them, have trouble expressing themselves, or do not understand or use the social rules of communication.</p> <p>Pupils who are on the autism spectrum often have needs that fall in this category.</p>
Cognition and learning	<p>Pupils with learning difficulties usually learn at a slower pace than their peers.</p> <p>A wide range of needs are grouped in this area, including:</p> <ul style="list-style-type: none">• Specific learning difficulties, which impact 1 or more specific aspects of learning, such as: dyslexia, dyscalculia and dyspraxia• Moderate learning difficulties• Severe learning difficulties• Profound and multiple learning difficulties, which is where pupils are likely to have severe and complex learning difficulties as well as a physical disability or sensory impairment
Social, emotional and mental health	<p>These needs may reflect a wide range of underlying difficulties or disorders. Pupils may have:</p> <ul style="list-style-type: none">• Mental health difficulties such as anxiety, depression or an eating disorder• Attention deficit disorder, attention deficit hyperactive disorder or attachment disorder• Suffered adverse childhood experiences <p>These needs can manifest in many ways, for example as challenging, disruptive or disturbing behaviour, or by the pupil becoming withdrawn or isolated.</p>

AREA OF NEED	
Sensory and/or physical	<p>Pupils with these needs have a disability that hinders them from accessing the educational facilities generally provided.</p> <p>Pupils may have:</p> <ul style="list-style-type: none"> • A sensory impairment such as vision impairment, hearing impairment or multi-sensory impairment • A physical impairment <p>These pupils may need ongoing additional support and equipment to access all the opportunities available to their peers.</p>

6. Roles and responsibilities

6.1 The SENCO

The SENCO at our school is Mrs Kerry Wood. Our SENDCo is also our Assistant Headteacher for Inclusion.

They will:

- Inform any parents that their child may have SEN and then liaise with them about the pupil's needs and any provision made
- Work with the headteacher and SEN governor to determine the strategic development of the SEND policy and provision in the school
- Have day-to-day responsibility for the operation of this SEND policy and the co-ordination of specific provision made to support individual pupils with SEN, including those who have EHC plans
- Provide professional guidance to colleagues and liaise and work with staff, parents, and other agencies to make sure that pupils with SEN receive appropriate support and high-quality teaching
- Advise on the graduated approach to providing SEN support and differentiated teaching methods appropriate for individual pupils
- Advise on the deployment of the school's delegated budget and other resources to meet pupils' needs effectively
- Be a point of contact for external agencies, especially the local authority (LA) and its support services, and work with external agencies to ensure that appropriate provision is provided
- Liaise with potential next providers of education to make sure that the pupil and their parents are informed about options and that a smooth transition is planned
- When a pupil moves to a different school or institution: Make sure that all relevant information about a pupil's SEN and the provision for them are sent to the appropriate authority, school or institution in a timely manner

- Work with the headteacher and school governors to make sure the school meets its responsibilities under the Equality Act 2010 with regard to reasonable adjustments and access arrangements
- Make sure the school keeps its records of all pupils with SEND up to date and accurate
- With the headteacher, monitor to identify any staff who have specific training needs regarding SEN, and incorporate this into the school's plan for continuous professional development
- With the headteacher, regularly review and evaluate the breadth and impact of the SEND support the school offers or can access, and co-operate with the LA in reviewing the provision that is available locally and in developing the local offer
- Prepare and review information for inclusion in the school's SEN information report and any updates to this policy
- With the headteacher and teaching staff, identify any patterns in the school's identification of SEN, both within the school and in comparison with national data, and use these to reflect on and reinforce the quality of teaching

6.2 The Governing Board/Local Advisory Board

The governing board is responsible for making sure the following duties are carried out, though the duties can be delegated to a committee or an individual:

- Co-operate with the LA in reviewing the provision that is available locally and developing the local offer
- Do all it can to make sure that every pupil with SEND gets the support they need
- Make sure that pupils with SEND engage in the activities of the school alongside pupils who don't have SEND
- Inform parents when the school is making special educational provision for their child
- Make sure that the school has arrangements in place to support any pupils with medical conditions
- Provide access to a broad and balanced curriculum
- Have a clear approach to identifying and responding to SEND
- Provide an annual report for parents on their child's progress
- Record accurately and keep up to date the provision made for pupils with SEND
- Publish information on the school website about how the school is implementing its SEND policy, in a SEN information report
- Publish information about the arrangements for the admission of disabled children, the steps taken to prevent disabled children being treated less favourably than others, the facilities provided to assist access of disabled children, and the school's accessibility plans
- Make sure that there is a qualified teacher designated as SENCO for the school and that the key responsibilities of the role are set out, and monitor the effectiveness of how these are carried out

- Determine their approach to using their resources to support the progress of pupils with SEND

6.3 The SEND link governor

The SEND link governor is currently Ms Westgate.

The SEND governor will:

- Help to raise awareness of SEND issues at governing board meetings
- Monitor the quality and effectiveness of SEND provision within the school and update the governing board on this
- Work with the headteacher and SENCO to determine the strategic development of the SEND policy and provision in the school

6.4 The headteacher

The headteacher will:

- Work with the SENCO and SEND link governor to determine the strategic development of the SEND policy and provision within the school
- Work with the SENCO and school governors to make sure the school meets its responsibilities under the Equality Act 2010 with regard to reasonable adjustments and access arrangements
- Have overall responsibility for, and awareness of, the provision for pupils with SEND, and their progress
- Have responsibility for monitoring the school's notional SEND budget and any additional funding allocated by the LA to support individual pupils
- Make sure that the SENCO has enough time to carry out their duties
- Have an overview of the needs of the current cohort of pupils on the SEND register
- Advise the LA when a pupil needs an EHC needs assessment, or when an EHC plan needs an early review
- With the SENCO, monitor to identify any staff who have specific training needs regarding SEN, and incorporate this into the school's plan for continuous professional development
- With the SENCO, regularly review and evaluate the breadth and impact of the SEND support the school offers or can access, and co-operate with the LA in reviewing the provision that is available locally and in developing the local offer
- With the SENCO and teaching staff, identify any patterns in the school's identification of SEN, both within the school and in comparison with national data, and use these to reflect on and reinforce the quality of teaching

6.5 Class teachers

Each class teacher is responsible for:

- Planning and providing high-quality teaching that is differentiated to meet pupil needs through a graduated approach

- The progress and development of every pupil in their class
- Working closely with any teaching assistants or specialist staff to plan and assess the impact of support and interventions, and consider how they can be linked to classroom teaching
- Working with the SENCO to review each pupil's progress and development, and decide on any changes to provision
- Ensuring they follow this SEND policy and the SEN information report
- Communicating with parents regularly to:
 - Set clear outcomes and review progress towards them
 - Discuss the activities and support that will help achieve the set outcomes
 - Identify the responsibilities of the parent, the pupil and the school
 - Listen to the parents' concerns and agree their aspirations for the pupil

6.6 Parents or carers

Parents or carers should inform the school if they have any concerns about their child's progress or development.

Parents or carers of a pupil on the SEND register will always be given the opportunity to provide information and express their views about the pupil's SEND and the support provided. They will be invited to participate in discussions and decisions about this support. They will be:

- Invited to at least 3 meetings a year to review the provision that is in place for their child
- Asked to provide information about the impact of SEN support outside school and any changes in the pupil's needs
- Given the opportunity to share their concerns and, with school staff, agree their aspirations for the pupil
- Given an annual report on the pupil's progress

The school will take into account the views of the parent or carer in any decisions made about the pupil.

6.7 The pupil

Pupils will always be given the opportunity to provide information and express their views about their SEND and the support provided. They will be invited to participate in discussions and decisions about this support. This might involve the pupil:

- Explaining what their strengths and difficulties are
- Contributing to setting targets or outcomes
- Attending review meetings
- Giving feedback on the effectiveness of interventions

The pupil's views will be taken into account in making decisions that affect them, whenever possible.

7. SEN information report

The school publishes a SEN information report on its website, which sets out how this policy is implemented in the school.

The information report will be updated annually and as soon as possible after any changes to the information it contains.

You can access our SEN Information report: www.oakwoodprimary.org

8. Our approach to SEND support

8.1 Identifying pupils with SEND and assessing their needs

We will assess each pupil's current skills and levels of attainment when they start at the school. This will build on information received from previous settings and Key Stages, where appropriate. We will also consider any evidence that the pupil may have a disability and if so, what reasonable adjustments the school may need to make.

Class teachers will regularly assess the progress of all pupils and identify any whose progress:

- Is significantly slower than that of their peers starting from the same baseline
- Fails to match or better their previous rate of progress
- Fails to close the attainment gap between them and their peers
- Widens the attainment gap

This may include progress in areas other than attainment, for example, wider development or social needs.

When teachers identify an area where a pupil is making slow progress, they will target the pupil's area of weakness with differentiated, high-quality teaching. If progress does not improve, the teacher will raise the issue with the SENCO to have an initial discussion about whether this lack of progress may be due to a special educational need. Where necessary they will, in consultation with the pupil's parents or carers, consider consulting an external specialist for further advice (this could include CLASS, TASS Inclusion advisors or Educational Psychologists).

Slow progress and low attainment will not automatically mean a pupil is recorded as having SEN.

Potential short-term causes of impact on behaviour or performance will be considered, such as bullying or bereavement. Staff will also take particular care in identifying and assessing SEN for pupils whose first language is not English.

When deciding whether the pupil needs special educational provision, we will start with the desired outcomes, including the expected progress and attainment, and the views and the wishes of the pupil and their parents. We will use this to determine the support that is needed and whether we can provide it by adapting our core offer, or whether something different or additional is needed.

If a pupil is joining the school, and:

- Their previous setting has already identified that they have SEN

- They are known to external agencies
- They have an education, health and care plan (EHCP)

then the school will work in a multi-agency way to make sure we get relevant information before the pupil starts at school, so support can be put in place as early as possible.

8.2 Consulting and involving pupils and parents

The school will put the pupil and their parents at the heart of all decisions made about special educational provision.

When we are aiming to identify whether a pupil needs special education provision, we will have an early discussion with the pupil and their parents. These conversations will make sure that:

- Everyone develops a good understanding of the pupil's areas of strength and difficulty
- We take into account any concerns the parents have
- Everyone understands the agreed outcomes sought for the child
- Everyone is clear on what the next steps are

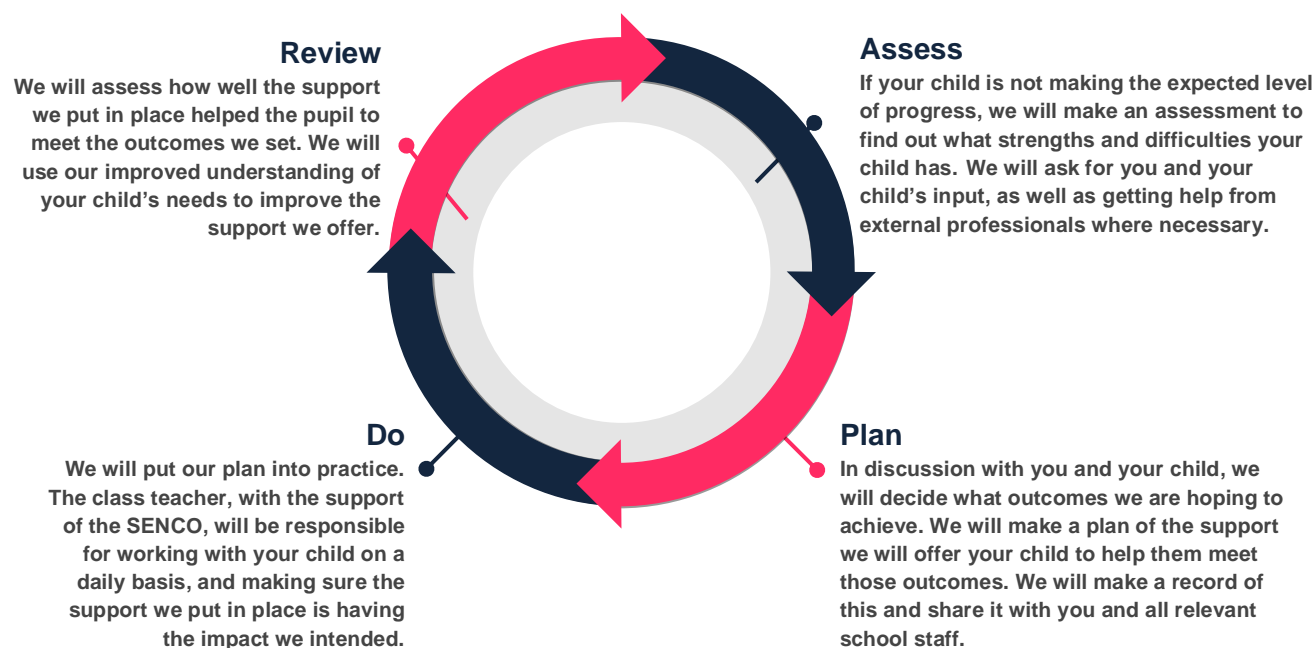
Notes of these early discussions will be added to the pupil's record and given to their parents.

We will formally notify parents if it is decided that a pupil will receive special educational provision or if they will be added to our monitoring list to closely monitor progress.

8.3 The graduated approach to SEN support

We will follow the 'graduated approach' to meeting your child's SEN needs.

The graduated approach is a 4-part cycle of **assess, plan, do, review**. These cycles are reviewed three times a year with targets and provision matched to the outcomes we want children to be able to achieve. Review meetings are held with teachers and parents at least 3 times a year to ensure that plans are reviewed and that all parties are working together to provide support that is based on achieving the best outcomes for children.



As a part of the planning stage of the graduated approach, we will set outcomes that we want to see your child achieve.

Whenever we run an intervention with your child, we will assess them before the intervention begins. This is known as a 'baseline assessment'. We do this so we can see how much impact the intervention has on your child's progress.

We will track your child's progress towards the outcomes we set over time and improve our offer as we learn what your child responds to best.

This process will be continual. If the review shows a pupil has made progress, they may no longer need the additional provision made through SEN support. For others, the cycle will continue and the school's targets, strategies and provisions will be revisited and refined.

8.4 Levels of support

School-based SEN provision

Pupils receiving SEN provision will be placed on the school's SEND register. These pupils have needs that can be met by the school through the graduated approach. Where the pupil's needs cannot be adequately met with in-house expertise, staff will consider involving an external specialist as soon as possible.

The provision for these pupils is funded through the school's notional SEND budget.

On the census these pupils will be marked with the code K.

Education, health and care (EHC) plan

Pupils who need more support than is available through the school's school-based SEN provision may be entitled to an EHC plan. The plan is a legal document that describes the needs of the pupil, the provision that will be put in place, and the outcomes sought.

The provision for these pupils will be funded from the school's notional SEND budget, and potentially from the LA (from the high-level needs funding block of the dedicated schools grant).

On the census these pupils will be marked with the code E.

8.5 Evaluating the effectiveness of SEN provision

We evaluate the effectiveness of provision for pupils with SEN by:

- Tracking pupils' progress, including by using provision maps
- Carrying out the review stage of the graduated approach in every cycle of SEN support
- Using pupil questionnaires/pupil voice
- Monitoring by the SENCO
- Holding annual reviews for pupils with EHC plans
- Getting feedback from the pupil and their parents

9. Expertise and training of staff

Training will regularly be provided to teaching and support staff. The headteacher and the SENCO will continuously monitor to identify any staff who have specific training needs and will incorporate this into the school's plan for continuous professional development.

10. Links with external professional agencies

The school recognises that it won't be able to meet all the needs of every pupil. Whenever necessary the school will work with external support services such as:

- Speech and language therapists
- Specialist teachers or support services (including CLASS or TASS Inclusion Advisors)
- Educational psychologists
- Occupational therapists, speech and language therapists or physiotherapists
- General practitioners or paediatricians
- School nurses
- Child and adolescent mental health services (CAMHS)
- Education welfare officers
- Social services

11. Admission and accessibility arrangements

11.1 Admission arrangements

Whenever SEN is identified on the admissions form to our school, a tour is arranged with both the Headteacher and the SENCo to enable parents to discuss their child's needs and offer school the opportunity to discuss provision that can be provided at Oakwood. We will often liaise with your child's previous SENCO to ensure that we can replicate support (where able) as quickly as possible to ease transition to our setting.

Children with EHCPs are admitted to Oakwood via a consultation process with County in which we are given the opportunity to review your child's EHCP to ascertain whether we feel we are able to meet your child's needs at our school. All children whose EHC plan names the school will be admitted before any other places are allocated.

As a school, we adhere to the fair access protocol as detailed in our school admissions policy. This can be accessed on our school website www.oakwoodprimary.org

11.2 Accessibility arrangements

Please refer to our school's accessibility policy which can be found on our school website www.oakwoodprimaryacademy.org. The aim of our school is to ensure that our school is inclusive, providing high quality education to all pupils; preparing them for the next steps of their education. This includes those children with medical needs and disabilities.

12. Complaints about SEND provision

If you are concerned about any aspect of the education provided this should be first discussed with the class teacher. Most matters of concern can be resolved positively in this way. All teachers work hard to ensure the children in their class are happy and making progress so welcome the opportunity to resolve anything affecting this. If a complaint cannot be resolved in this way, complaints can be made to our Headteacher. You will then be referred to the school's complaints policy.

Our school complaints policy can be requested via or school office or accessed on our school website www.oakwoodprimary.org

If you are not satisfied with the school's response, you can escalate the complaint. In some circumstances, this right also applies to the pupil themselves.

To see a full explanation of suitable avenues for complaint, see pages 246 and 247 of the [SEN Code of Practice](#).

If you feel that our school discriminated against your child because of their SEND, you have the right to make a discrimination claim to the first-tier SEND tribunal. To find out how to make such a claim, you should visit: <https://www.gov.uk/complain-about-school/disability-discrimination>

You can make a claim about alleged discrimination regarding:

- Admission
- Exclusion
- Provision of education and associated services
- Making reasonable adjustments, including the provision of auxiliary aids and services

Before going to a SEND tribunal, you can go through processes called disagreement resolution or mediation, where you try to resolve your disagreement before it reaches the tribunal.

For more information on this you can access www.localoffer.eastsussex.gov.uk

13. Monitoring and evaluation arrangements

13.1 Evaluating the effectiveness of the policy

We are constantly looking for ways to improve our SEND policy. We will do this by evaluating whether or not we are meeting our objectives set out in section 1.

We will evaluate how effective our SEND provision is with regards to:

- All staff's awareness of pupils with SEND at the start of the autumn term
- How early pupils are identified as having SEND
- Pupils' progress and attainment once they have been identified as having SEND

- Whether pupils with SEND feel safe, valued and included in the school community
- Comments and feedback from pupils and their parents

13.2 Monitoring the policy

This policy will be reviewed by our SENDCo every year with updates as needed. It will also be updated when any new legislation, requirements or changes in procedure occur.

The policy will be shared annually with the governing body and Headteacher.

14. Links with other policies and documents

- SEN information report
- The local offer www.czone.eastsussex.gov.uk
- Accessibility plan
- Behaviour policy
- Supporting pupils with medical conditions policy
- Attendance policy
- Safeguarding / child protection policy
- Complaints policy

All policies are available on our school website and via our school office.